

These products are manufactured at a factory which has received quality control system certification in accordance with the ISO international standards.



CERTIFICATE No.
JMI-0062
ISO 9001/BS 5750Pt1
EN 29001/JIS Z9901

High Resolution Digital Color Camera **KP-F100C**

Progressive Scan System Mega-Pixel Color Camera

The Hitachi KP-F100C is a progressive scan type color camera using a 1,300,000 square pixel bayer filter CCD, and is most suitable for using with an image processing system of high picture quality.



● **High resolution**

High resolution is ensured by the 2/3-inch 1,300,000-pixel CCD sensor.

● **Digital signal output**

10-bit, 20.2MHz digital output signal conforming to EIA-644. Most suitable for the improvement in signal processing accuracy

● **Frame · On · Demand function**

Any image captured at an optional timing can be obtained instantly as a picture by an external trigger signal input. Capture time can be adjusted by the use of the external trigger signal and the built-in shutter.

DIGITAL

Specifications

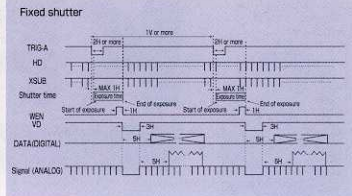
Model	KP-F100C
Imaging devise	Inter-line bayer arrangement color filter CCD (2/3-inch)
No. of pixels	1360(H)x1034(V)
Pixel size	6.7 μm(H)x6.7 μm(V)
No. of effective pixels	1300(H)x1030(V)
Sensing area	8.71mm(H)x6.90mm(V)
Lens mount	C-mount
Flange focal distance	17.526mm
Hor. frequency	12.528kHz
Vert. frequency	12Hz
Sync system	Internal/external (Automatic switching) Non-interlace
External sync input	HD/VD: 5Vp-p±1V, negative, Input impedance: 1kΩ, Frequency deviation: ±1%
Video output	Digital output conforming to EIA-644 (10-bit, 20.2MHz)
Sensitivity	400Lx, f/4, 3200K
Minimum illuminaton	1Lx, f/1.4, w/o IR cut filter
Electronic shutter speed	1/10,000, 1/4000, 1/2000, 1/1000, 1/250, 1/125, 1/60, 1/30s
Frame-On-Demand function	OFF: Normal exposure. Settable to any of above shutter speeds by external switches. Switchable to ON by external switches. Externall trigger signals needed. Settable to Fixed shutter, TWO trigger or SYNC non-reset mode. Set to OFF at factory.
Supply voltage	12VDC±1V
Power consumption	500mA approx.
Ambient conditions	Operating: 0 to 40°C, 90%RH or less Storage: 10 to 50°C, 70%RH or less
Anti-vibration	3G (Duration: 30 min., Directions:XYZ)
Anti-shock	30G
Dimensions	44(W)x44(H)x110(D)mm
Mass	200g approx.

Note:When the camera is used continuously, ambient temperature should be at 40°C or less to ensure stable performance.

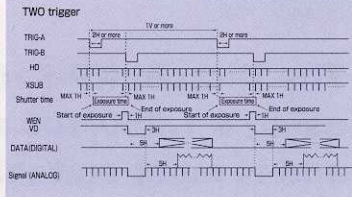
Frame-On-Demand Function

With the Frame-On-Demand function, moving objects can be captured at an optional or fixed exposure time by supplying a trigger pulse at an optional timing.

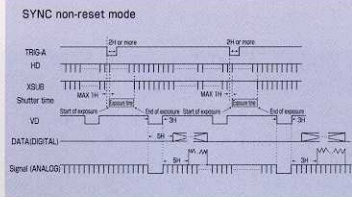
●Fixed shutter mode
One trigger pulse (TRIG A) is supplied. Exposure starts at the rising edge of the input pulse, and lasts for the time set by the fixed shutter switches on the rear.



●TWO trigger mode
Two trigger pulses (TRIG A and TRIG B) are supplied. Exposure starts at the rising edge of the TRIG A pulse, and ends at the falling edge of the TRIG B pulse. Desired exposure time can be set because the period between the two pulses is exposure time.



●SYNC non-reset mode
One trigger pulse (TRIG A) is supplied. Exposure starts at the rising edge of the input pulse, and lasts for the time set by the fixed shutter switches on the rear. (V-SYNC pulse is not reset.)



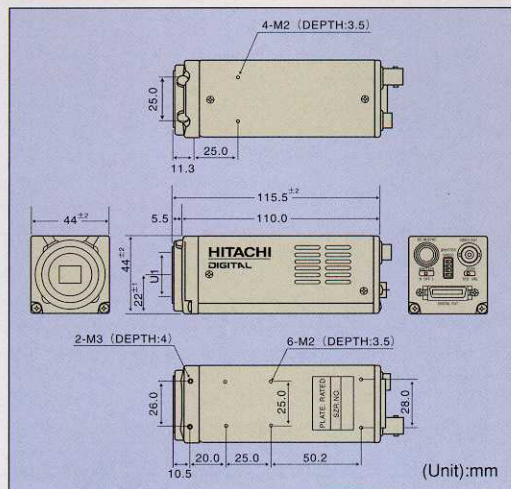
Setting of Electronic Shutter

●Setting of shutter mode and shutter speed

Speed	1/30	1/60	1/125	1/250
Switch position				
Speed	1/1000	1/2000	1/4000	1/10000
Switch position				

Note:A personal computer provided with a frame grabber is required to display color pictures.

Dimensions



Standard Composition

- 1) Camera unit (w/ IR cut filter)
- 2) Operation manual

Optional accessories

- 1) Lens
- 2) Tripod adaptor, TA-M1 (23855AX)
- 3) 12-pin plug, HR10A-10P-12S(01) (23810AX)
- 4) Junction box, JU-F1 (23832AX), JU-M1A (23831AX)
- 5) Dummy glass (AR-coated), ARC1214 (XMD0009)
- 6) Camera cables

	Mould type	Assembly type
2m	C-201KSM	C-201KS
5m	C-501KSM	C-501KS
10m	C-102KSM	C-102KS

Hitachi Denshi, Ltd

●Specifications are subject to change without notice.

HITACHI DENSHI (Europa) GmbH

Weiskircher Str. 88

63110 Rodgau, Germany

T. 06106-6992-0

Fax 06106-16906

<http://www.hitachi-denshi.de>

e-mail: webmaster@hitachi-denshi.de